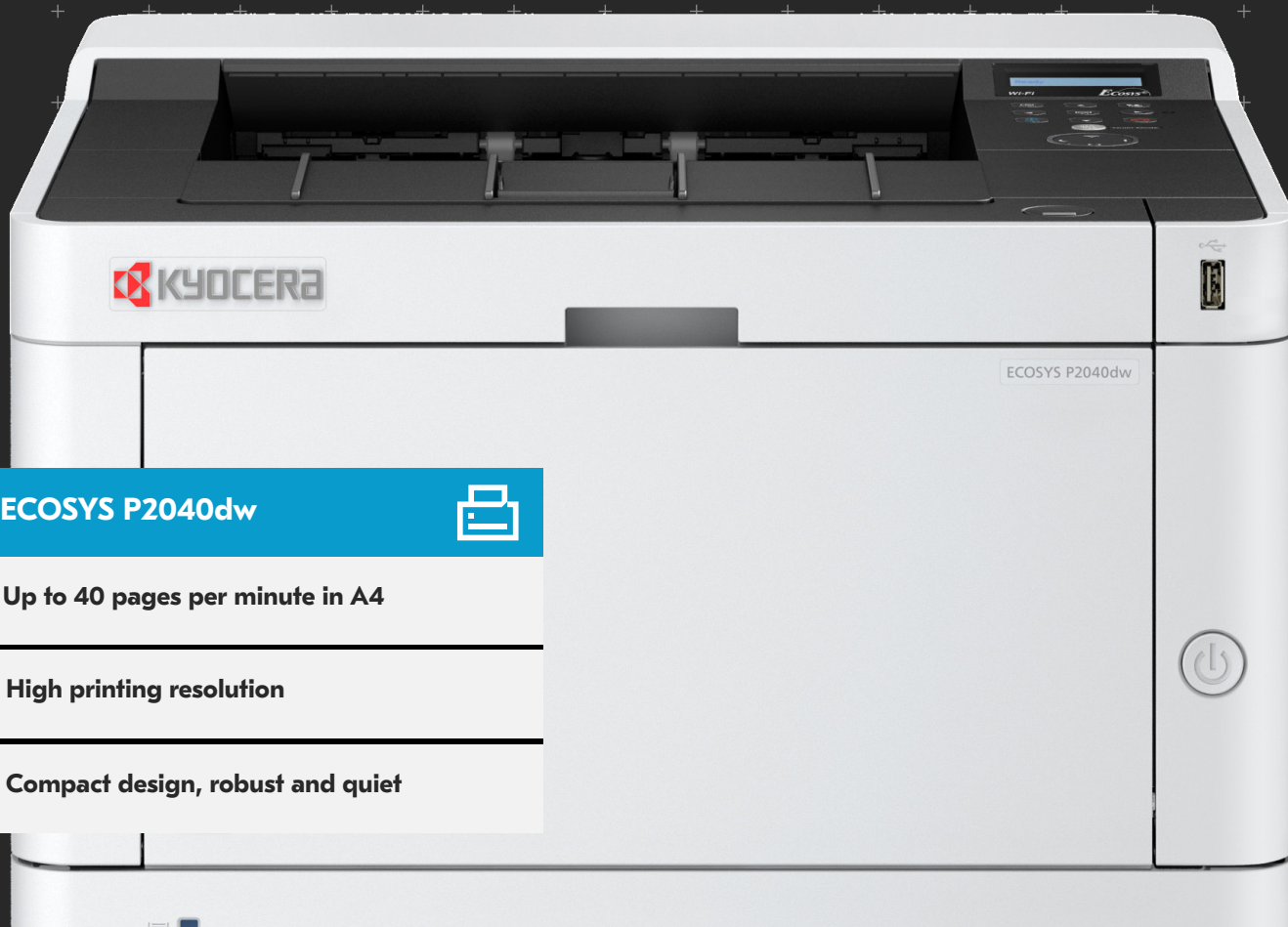
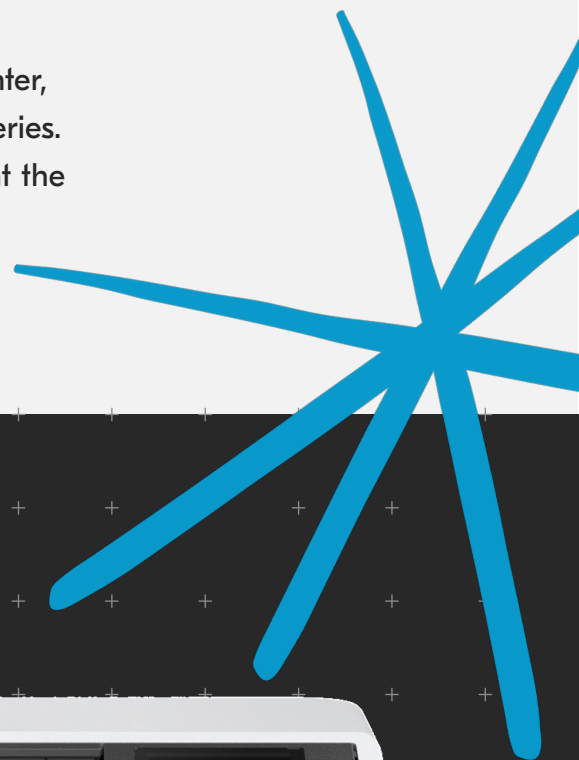




The feature-rich A4 print pros.

If you're looking for a fast, reliable and versatile A4 b/w office printer, you really can't go wrong with any model from our new ECOSYS series. But for all those who demand that little extra greatness, we present the P2040 devices.



ECOSYS P2040dw



Up to 40 pages per minute in A4

High printing resolution

Compact design, robust and quiet

Specifications

ECOSYS

ECOSYS stands for ECOlogy, ECONomy and SYStem-printing. With their long-life components, ECOSYS devices are designed to maximise durability and minimise the total cost of ownership with regard to maintenance, administration and consumables. The cartridge-free system means that toner is the only consumable. The modular design concept allows you to add workflow enhancing functions as required. Integrated system software provides long-term cross network compatibility. KYOCERA's long-life components cost you and the environment less.

ENVIRONMENTAL PRINT FEATURES

Duplex print mode (Double sided printing), N-Up printing mode (N pages on 1 sheet), Toner save mode (Draft print mode), Quiet mode (reduced print speed).

KYOCERA NETVIEWER

KYOCERA NetViewer enables complete monitoring and control of all ECOSYS printers and digital KYOCERA multifunction units from any Windows® PC and thus provides ideal network administration. It also supports the standardised SNMP protocol.

ECOSYS P2040dn/ECOSYS P2040dw

GENERAL

Technology: KYOCERA ECOSYS Laser

Control panel: 2 line LCD back lit display

Engine speed: Up to 40 pages A4 per minute

Print resolution: 300 dpi, 600 dpi, 1200 dpi

Warm-up time: Approx. 15 seconds or less

Time to first print: Approx. 6.4 seconds or less

CPU: 800MHz

Memory: Standard 256 MB, max. 256 MB

Standard interface:

ECOSYS P2040dn: USB 2.0 (Hi-Speed), USB Host Interface, Gigabit Ethernet

(10BaseT/100BaseTX/1000BaseT),

Slot for optional SD/SDHC-Card

ECOSYS P2040dw: USB 2.0 (Hi-Speed), USB Host

Interface, Gigabit Ethernet

(10BaseT/100BaseTX/1000BaseT), Wireless LAN, Slot for

optional SD/SDHC-Card

Dimensions (W x D x H): Main unit: 375 x 393 x 272 mm

Weight: Main unit: Approx. 14 kg

Power source: AC 240 V, 50 Hz

Power consumption:

Printing: 620 W

Ready mode: 8 W

Sleep mode: 0.8 W

COMMAND CENTER RX

The Command Center RX enables to control and manage various settings by accessing the device via Web browser.

USB HOST INTERFACE FOR USB FLASH MEMORY

Documents can be printed directly from a USB Flash Memory (e.g. USB stick) via the USB host interface. The documents stored as PDF, XPS, TIFF or JPEG are selected directly via the printer's control panel. No computer is required.

APPLICATION-BASED PROFILES

The KX printer driver can create a direct link between dedicated applications and predefined or customised print profiles. You can set that all documents from a user or an application be printed with activated duplex mode as standard, thus leading to a reduced paper consumption.

Noise (Sound pressure level: ISO 7779/ISO 9296):

Printing: 48.8 dB(A) LpA

Ready/Standby mode: Immeasurably low

Sleep mode: Immeasurably low

Safety standards: AS/NZs3260

This unit is manufactured according to ISO 9001 quality standard and ISO 14001 environmental standard.

PAPER HANDLING

All paper capacities quoted are based on a paper thickness of max. 0.11 mm. Please use paper recommended by KYOCERA under normal environmental conditions.

Input capacity: 100-sheet multi-purpose tray; 60 – 220 g/m²; A4, A5, A6, B5, B6, Letter, Legal, Custom (70 x 148 mm – 216 x 356 mm) 250-sheet universal cassette; 60 – 163 g/m²; A4, A5, A6, B5, Letter, Legal, Custom (105 x 148 – 216 x 356 mm). Max. input capacity with options: 850 sheets

Duplex functionality as standard: Double-sided printing: 60 – 163 g/m²; A4, A5, B5, Letter, Legal

Output capacity: Max. 250 sheet face down

PRINT FUNCTIONS

Controller language: PRESCRIBE IIc

Emulations: PCL 6 (PCL 5e/PCL-XL), PostScript 3 (KPDL 3),

PDF Direct Print, XPS/OpenXPS

Operating systems: All current Windows operating systems, MAC OS X Version 10.5 or higher, Unix, Linux as well as other operating systems on request

Fonts/barcodes: 93 scalable fonts for PCL6/KPDL3, 8 fonts for Windows Vista, 1 bitmap font, 45 barcodes (e.g. EAN8, EAN13) with automatic generation of checksums as well as support of two-dimensional barcodes PDF-417 under PRESCRIBE (PCL and other barcodes available as an option)

CONSUMABLES

Average continuous toner yield in accordance with ISO 19752

Toner-Kit TK-1164: toner yield 7,200 pages A4

Starter toner: toner yield 3,600 pages A4

OPTIONS

PF-1100 Paper feeder (max. 2 units): 250 sheets; 60 – 163 g/m²; A4, A5, A6, B5, Letter, Legal, Custom (105 x 148 mm – 216 x 356 mm)

UG-33: ThinPrint support

USB IC Card Reader + Card Authentication Kit (B): Support for various authentication keys available

The ECOSYS P2040dw total cost of ownership is very low thanks to long-life, energy-efficient components. And as to expect from any KYOCERA device, they are extremely reliable, so you can stay productive at any time.





digital document solutions

Phone: 08 9328 4600
Email: dds@multifaxdds.com.au
Web: www.multifaxdds.com.au

JUNE2021/ECOSYSP2040DN/P2040DW

